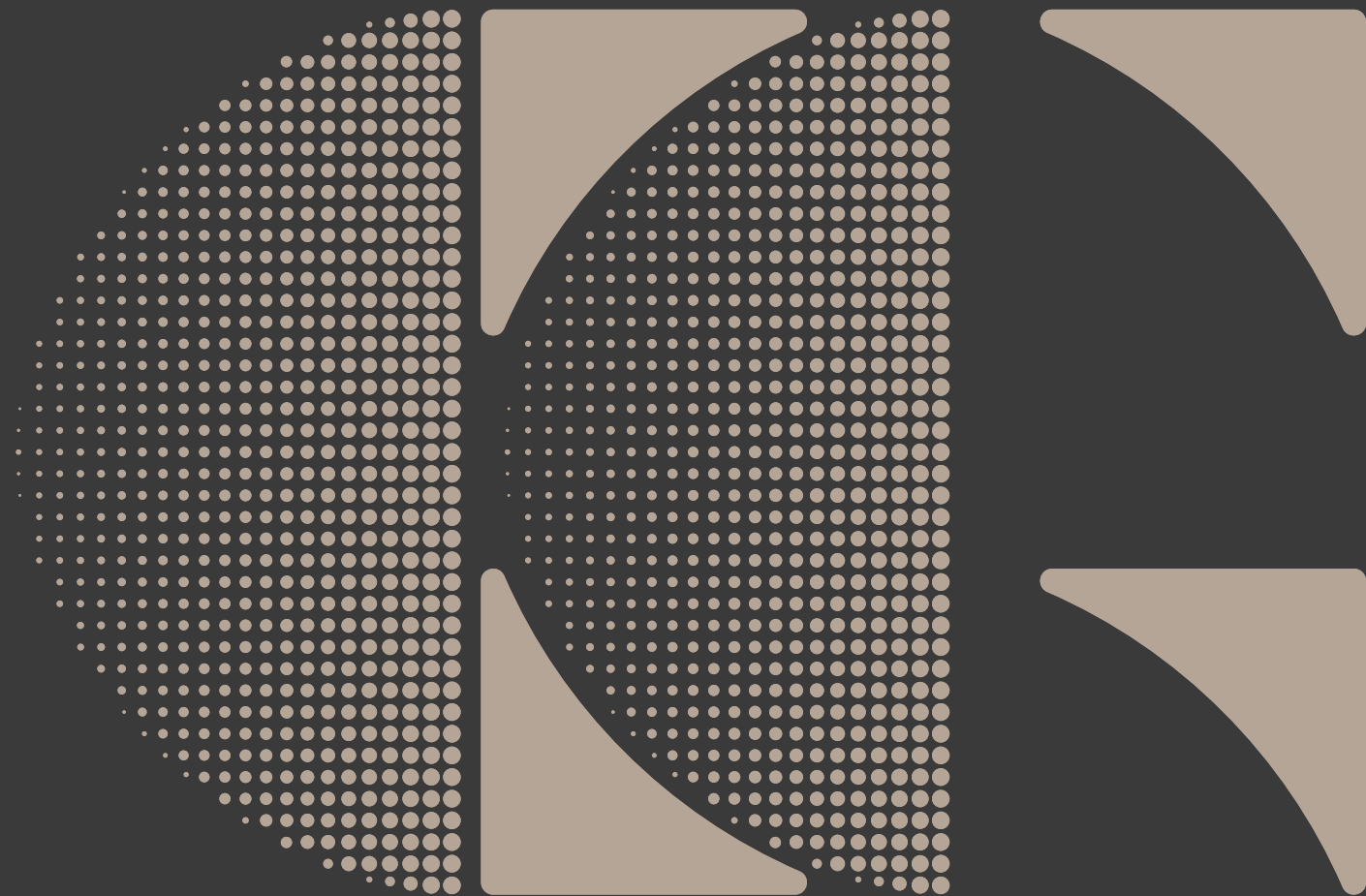


Company Profile



جاما
Gamà

جاما
Gamā

Building with Purpose,
Sustained for Generations



01

WHO WE ARE



WHO WE ARE

About Gama

GAMA OVERVIEW

Gama is a diversified contracting company delivering end to end solutions across two core sectors: Engineering, Procurement, and Construction (EPC) and Operations and Maintenance (O&M). As an EPC contractor, Gama executes complex and large scale projects with technical excellence and disciplined project management, integrating design, engineering, procurement, and construction to deliver projects that strengthen economies and enrich communities.

In the O&M domain, Gama ensures built assets, from roads, utilities, and public facilities to landscapes and specialized systems, remain efficient, resilient, and sustainable throughout their lifecycle. This dual capability enables Gama to offer clients a seamless continuum from project inception through long term operation, safeguarding performance and value for decades.

At the heart of the company's success is a multidisciplinary workforce of engineers, project managers, supervisors, and O&M specialists who bring global standards of expertise and local insight to every assignment.

By combining innovation with execution and function with identity, Gama delivers solutions that are dependable, enduring, and distinctive, projects that not only serve today's needs but continue to create value for future generations.

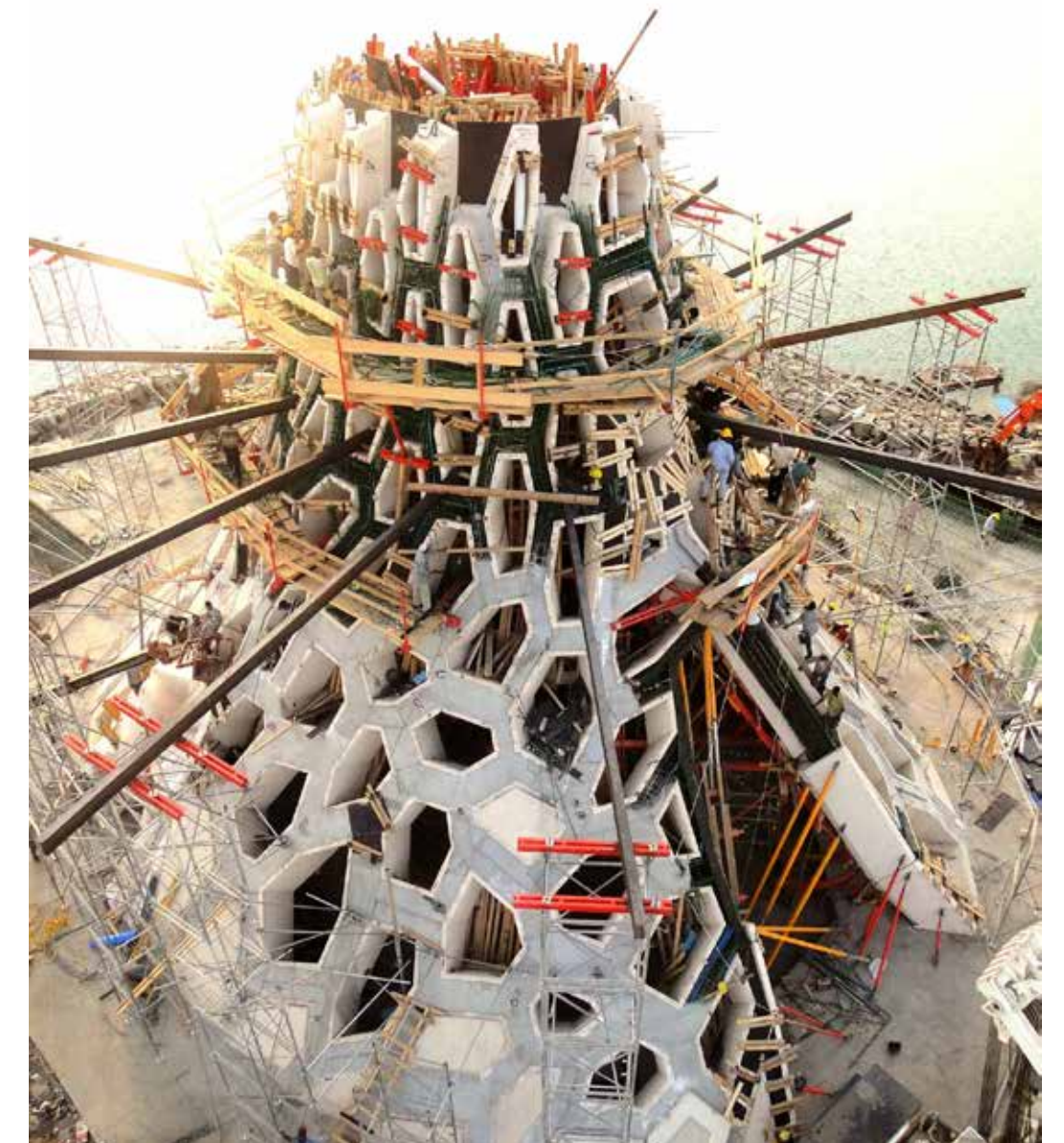
Beyond delivering quality infrastructure and outdoor environments, we focus on

how people experience and benefit from the assets and spaces we build and operate. From our engineers and designers who shape the vision, to the communities who use these spaces, and the clients who invest in them, our projects create long-term value. We see ourselves as builders, technicians, and problem-solvers with the capability to deliver lasting impact.

Our work brings intrinsic value to how land and infrastructure are developed, ensuring functionality, resilience, and harmony with the surrounding environment. By designing, constructing, and maintaining infrastructure, landscapes, and public spaces, we help commerce and communities thrive. Our strength lies in a complete understanding of the development cycle and a proven record of successful project delivery.

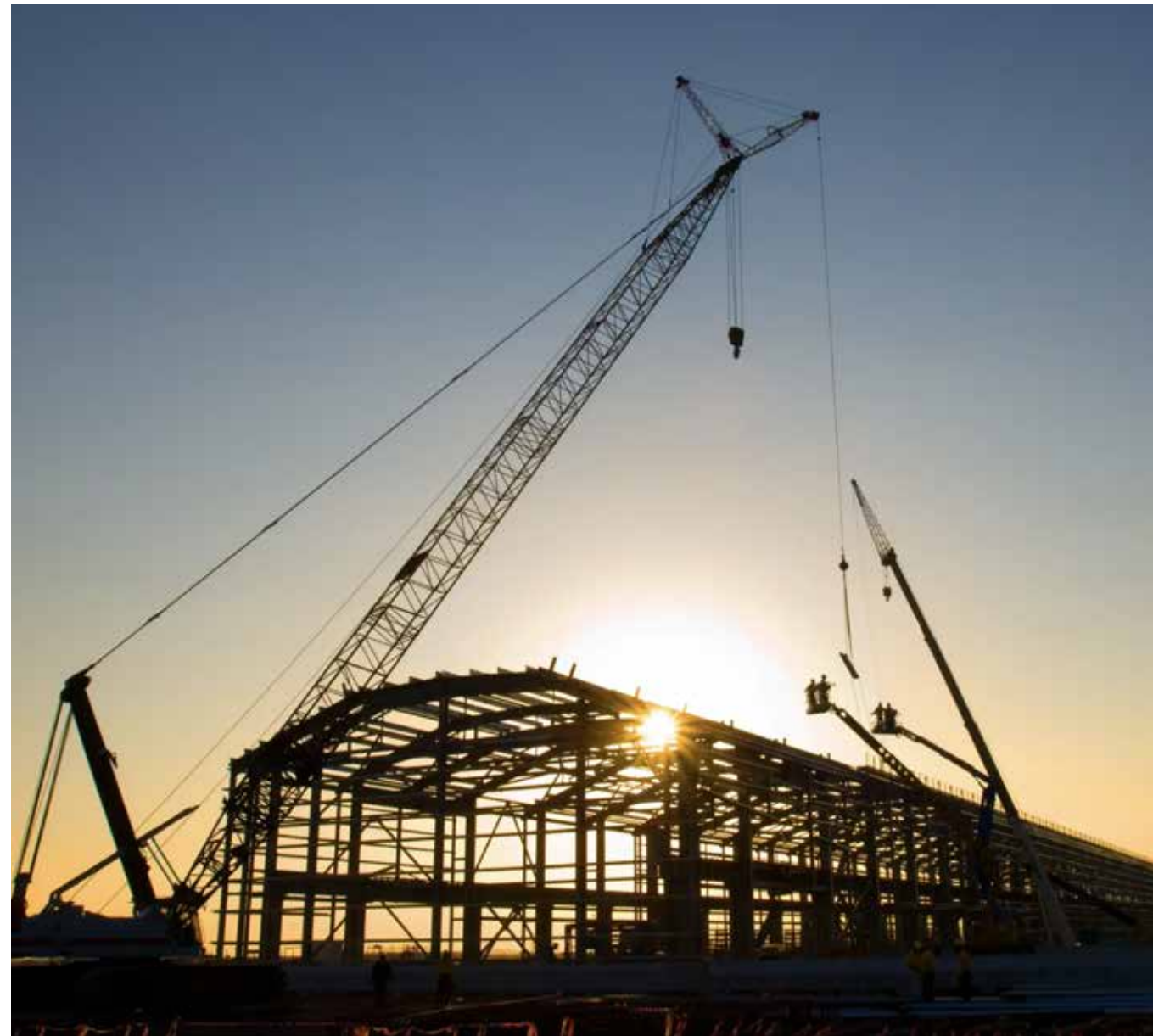
In a competitive regional market, infrastructure and public realm projects must deliver both utility and distinction. By combining practical execution with innovative thinking, we approach every assignment with the aim of delivering reliable, durable, and distinctive results that stand the test of time.

From building new assets to operating existing ones, Gama provides sustainable outcomes and dependable services across the full project lifecycle



WHO WE ARE

Our clients



We have created exceptional projects for many of Saudi Arabia's leading public and private institutions and we pride ourselves on the long lasting relationships that we have with our clients

FEATURED CLIENTS



Al Muhaidib Contracting Co.



KAFD Development Co.



Royal Commission for Jubail & Yanbu (RCJY)



MiSK Foundation



AMAALA Company (RSG)



Ministry of Culture



Banque Saudi Fransi



Princess Nourah Bint Abdul Rahman University



Elseif Engineering Contracting Group



King Abdullah University of Science and Technology



Olayan Financial Company



King Abdullah Petroleum Studies and Research Center

02

WHAT WE DO



WHAT WE DO

Services

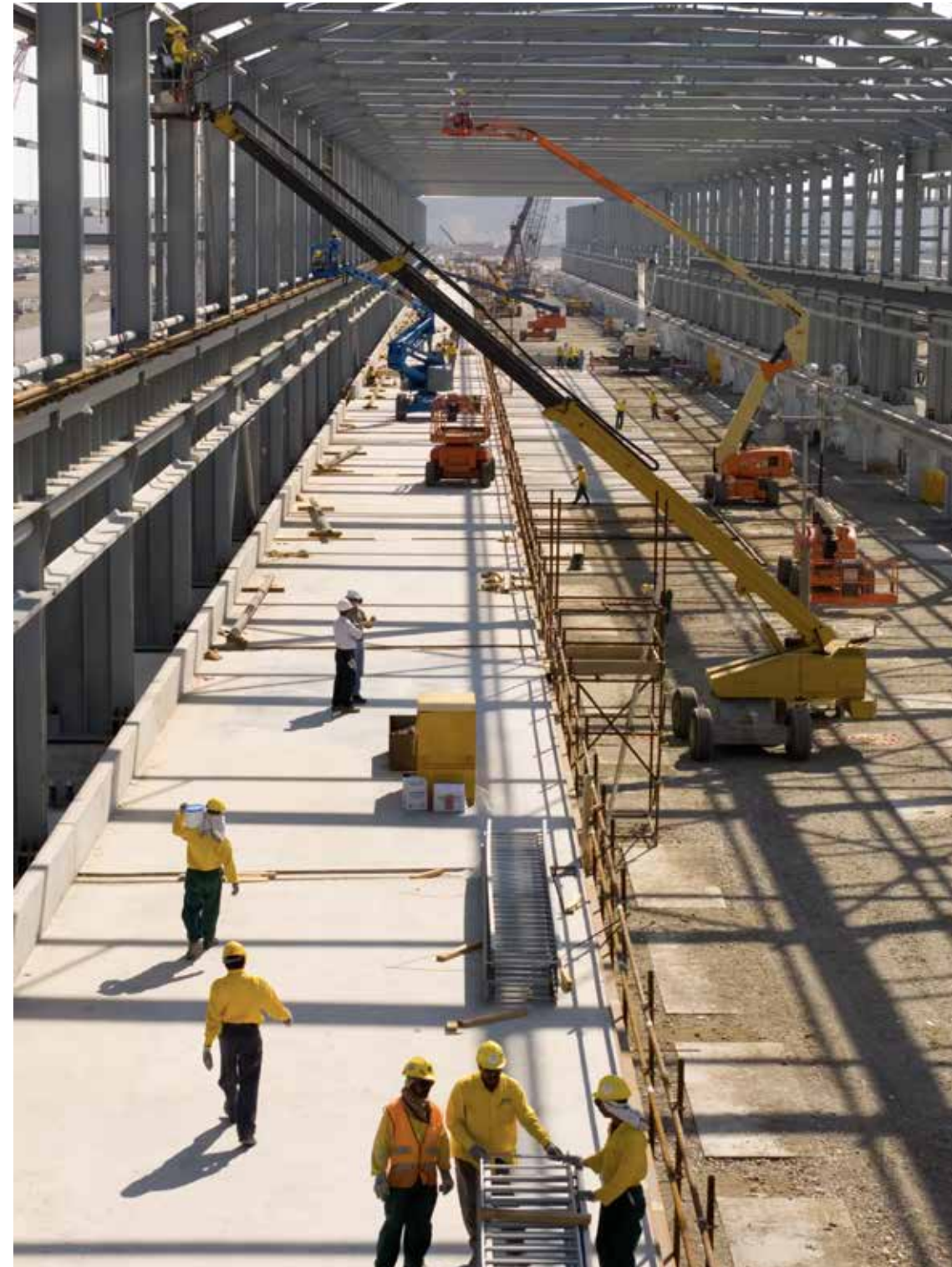
Gama provides a complete range of services across the full lifecycle of projects, offering clients integrated solutions from concept to long-term operation. In the **EPC** sector, our services include design, engineering, procurement, and construction, enabling us to deliver complex, large-scale projects with precision and discipline.

We build infrastructure, utilities, public facilities, landscapes, and specialized systems that enrich communities and strengthen economies.

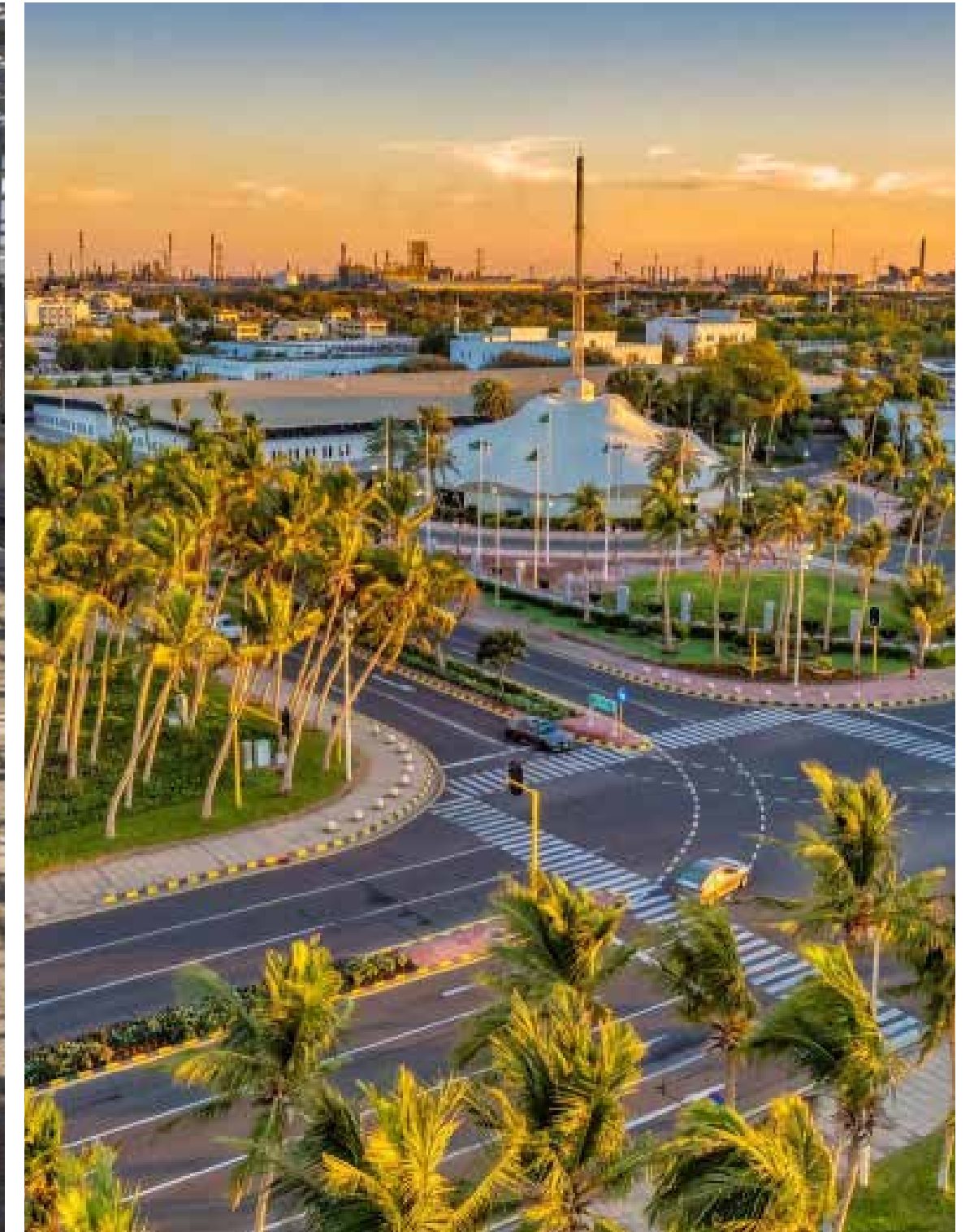
In the **O&M** sector, Gama provides comprehensive operations and maintenance services, ensuring that built assets remain efficient, resilient, and sustainable throughout their lifecycle. From the upkeep of roads, utilities, and irrigation systems to the management of landscapes and public facilities, we guarantee continuity, performance, and long-term value.

By uniting EPC and O&M services, Gama offers clients the assurance of a single trusted partner for both delivery and stewardship of their assets.

Engineering, Procurement & Construction (EPC)



Operation & Maintenance (O&M)



WHAT WE DO

Capabilities

Gama's capabilities stem from its ability to manage the complete development cycle with technical excellence and innovative thinking. Our multidisciplinary workforce of engineers, project managers, supervisors, technicians, and O&M specialists enables us to deliver projects of any scale with efficiency and precision. We integrate design, engineering, procurement, and construction into a seamless process while ensuring longterm operation and maintenance.

Supporting this expertise is Gama's substantial fleet of vehicles, plants, and specialized equipment, which allows us to execute projects with speed, reliability, and full control over delivery. This combination of skilled people and owned resources strengthens our capacity to handle large and complex assignments while maintaining flexibility and cost efficiency.

Our commitment to balancing functionality with identity ensures that projects are not only dependable and durable but also distinctive and aligned with community needs. By uniting global standards with local knowledge and by leveraging our proven resources, Gama consistently creates environments that are livable, resilient, and valuable for future generations.

Public Realm



Earthworks & Mass Excavation



Roads & Highways



Infrastructure & Utilities



03 OUR PROJECTS



OUR PROJECTS

Royal Commission for Yanbu Roads & Highway O&M



ROADS & HIGHWAYS O&M

Strengthening Urban Infrastructure in Yanbu Industrial City, this ongoing project supports the long-term functionality and safety of key public assets through targeted upgrades and maintenance across the road and highway network.

Our scope includes resurfacing works, hardscape rehabilitation, signage and traffic system enhancements, lighting improvements, and upkeep of circulation and monitoring infrastructure. Appointed by the Royal Commission for Jubail and Yanbu, this project reflects our continued focus on reliable delivery across critical public domains.

SERVICES

Roads & Highways Operation and Maintenance

CLIENT

Royal Commission for Jubail and Yanbu (RCJY)

LOCATION

Yanbu, Saudi Arabia

YEAR OF COMPLETION

2030 (Ongoing)



OUR PROJECTS

EARTHWORKS, ROADS & STORMWATER

EARTHWORKS, ROADS & STORMWATER

Our scope included extensive earthworks with bulk cut-and-fill operations, grading, hauling, and multi-layer compaction to prepare the site platform. Alongside this, we constructed stormwater drainage channels and culverts to manage runoff and protect the new infrastructure.

The works were completed with the construction of new road networks, incorporating sub-base preparation, asphalt paving, and finishing. Together, these activities delivered a complete civil infrastructure package ready to support future development.

SERVICES

Earthworks, Roads & Utilities

CLIENT

Municipality

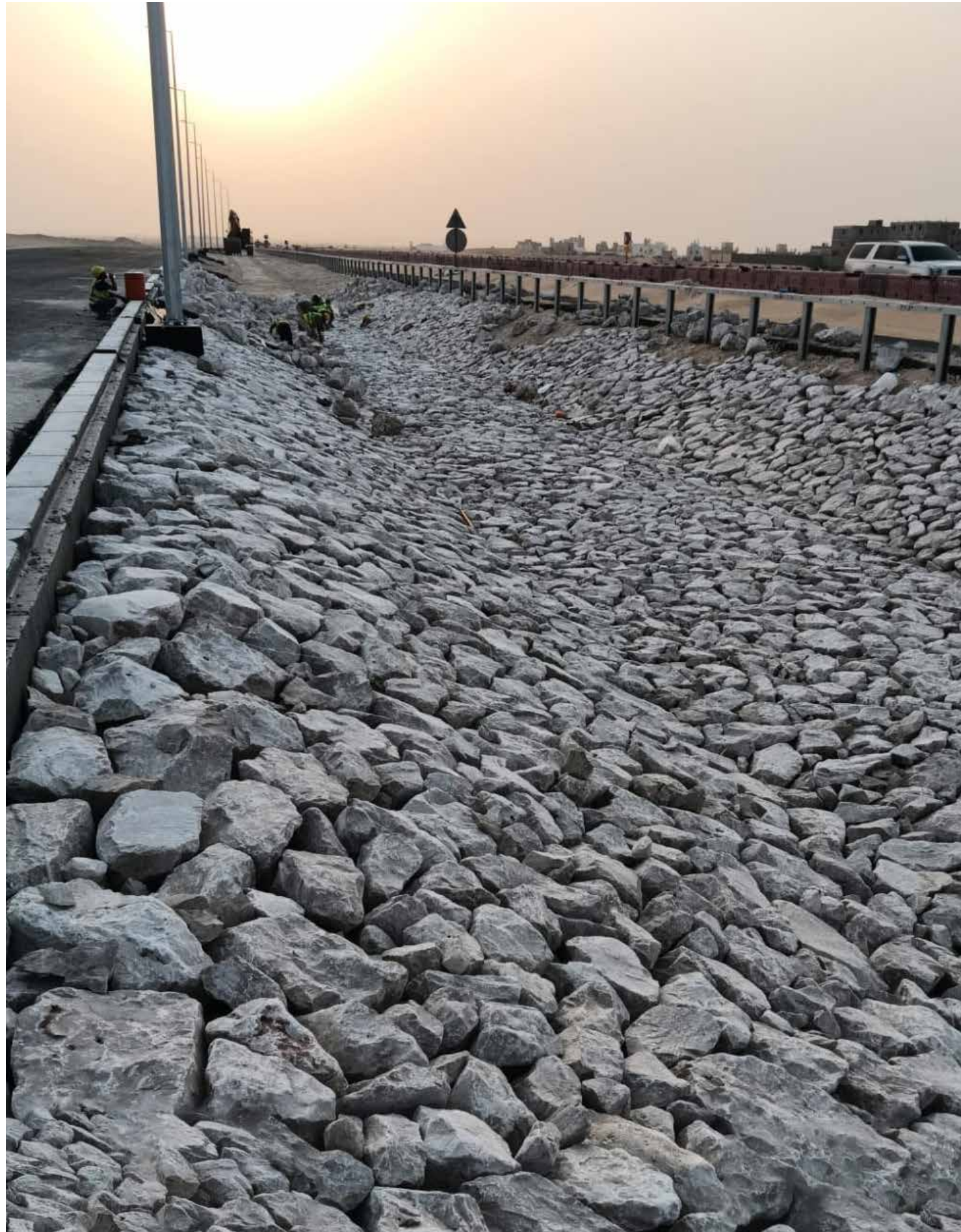
LOCATION

Saudi Arabia

YEAR OF COMPLETION

2025





OUR PROJECTS

Amaala Staff Villages

COASTAL LANDSCAPE WORKS

Shaping the Coastal Landscape Works, this expansive masterplan is dedicated to enhancing the residential and communal experience along a breathtaking beachfront. Spanning a comfortable 650 meters from the beach, our project ensures maximum accessibility for a serene yet engaging lifestyle.

Our engagement within this coastal living community encompasses major landscape and associated infrastructure works, including hardscape and softscape, irrigation systems, construction of various sports fields, supply and installation of street furniture, and coastal landscape works.

SERVICES

Landscape & Infrastructure Construction Works

CLIENT

Amaala Company

LOCATION

Red Sea, Saudi Arabia

YEAR OF COMPLETION

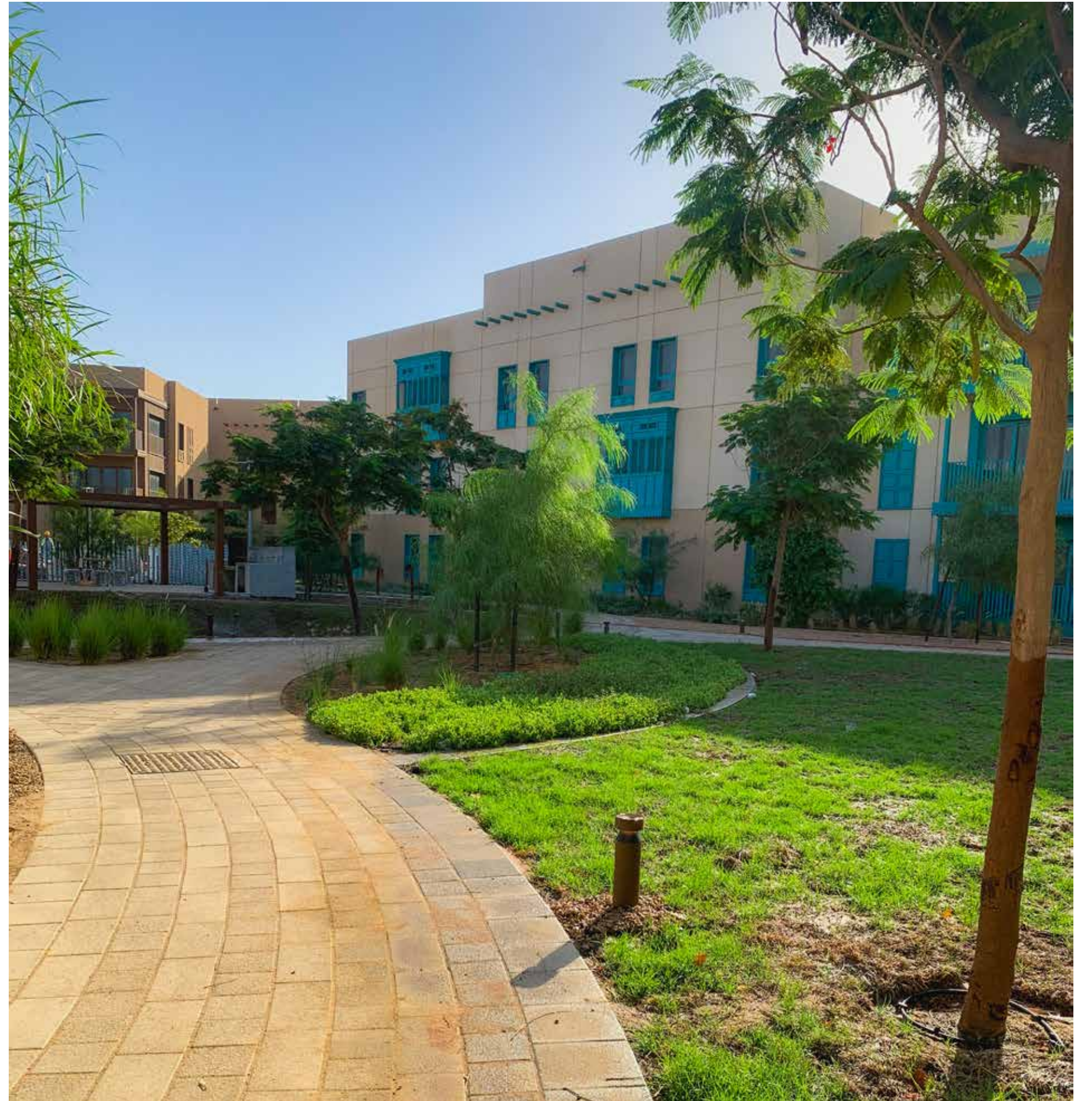
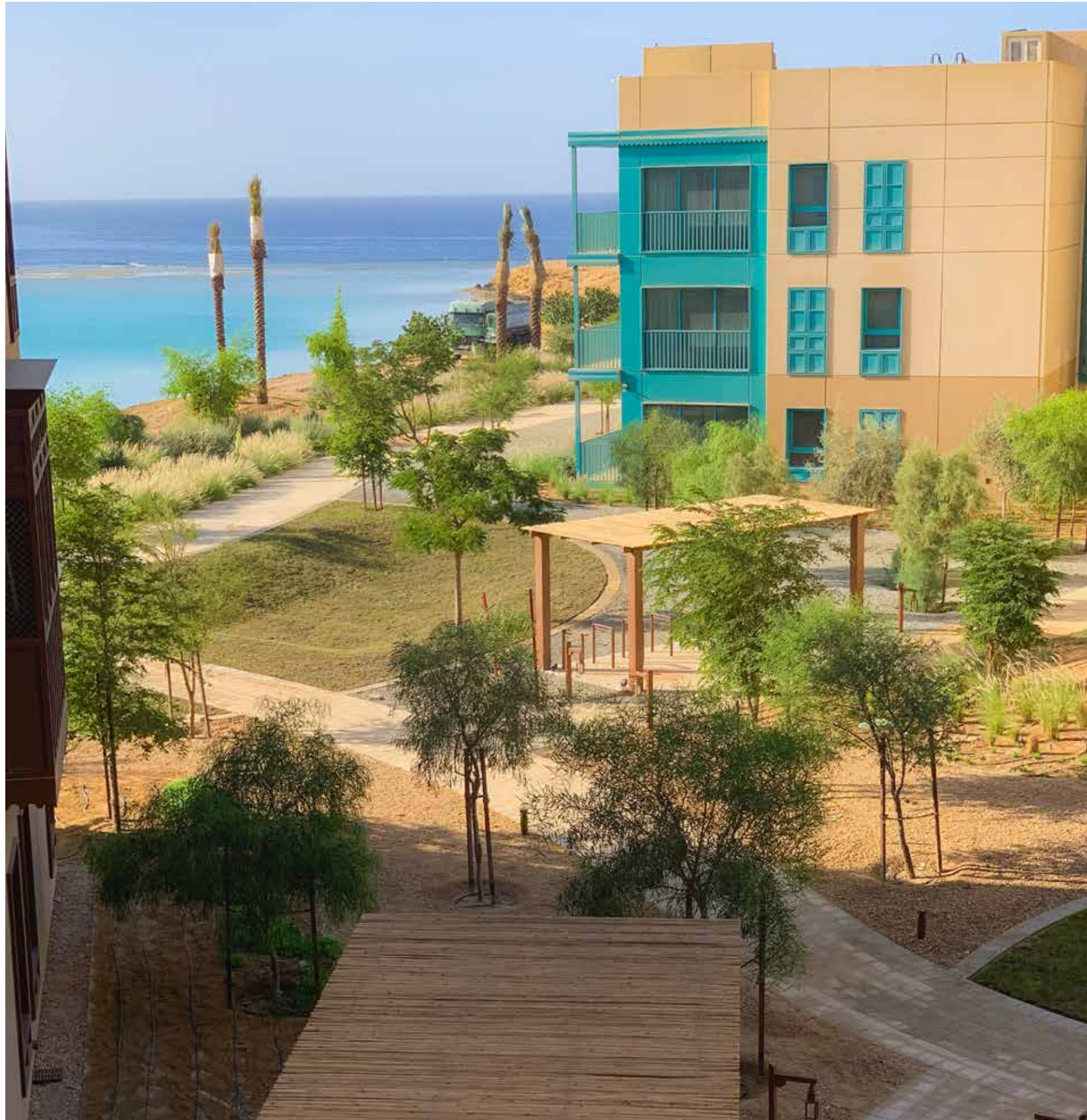
2025



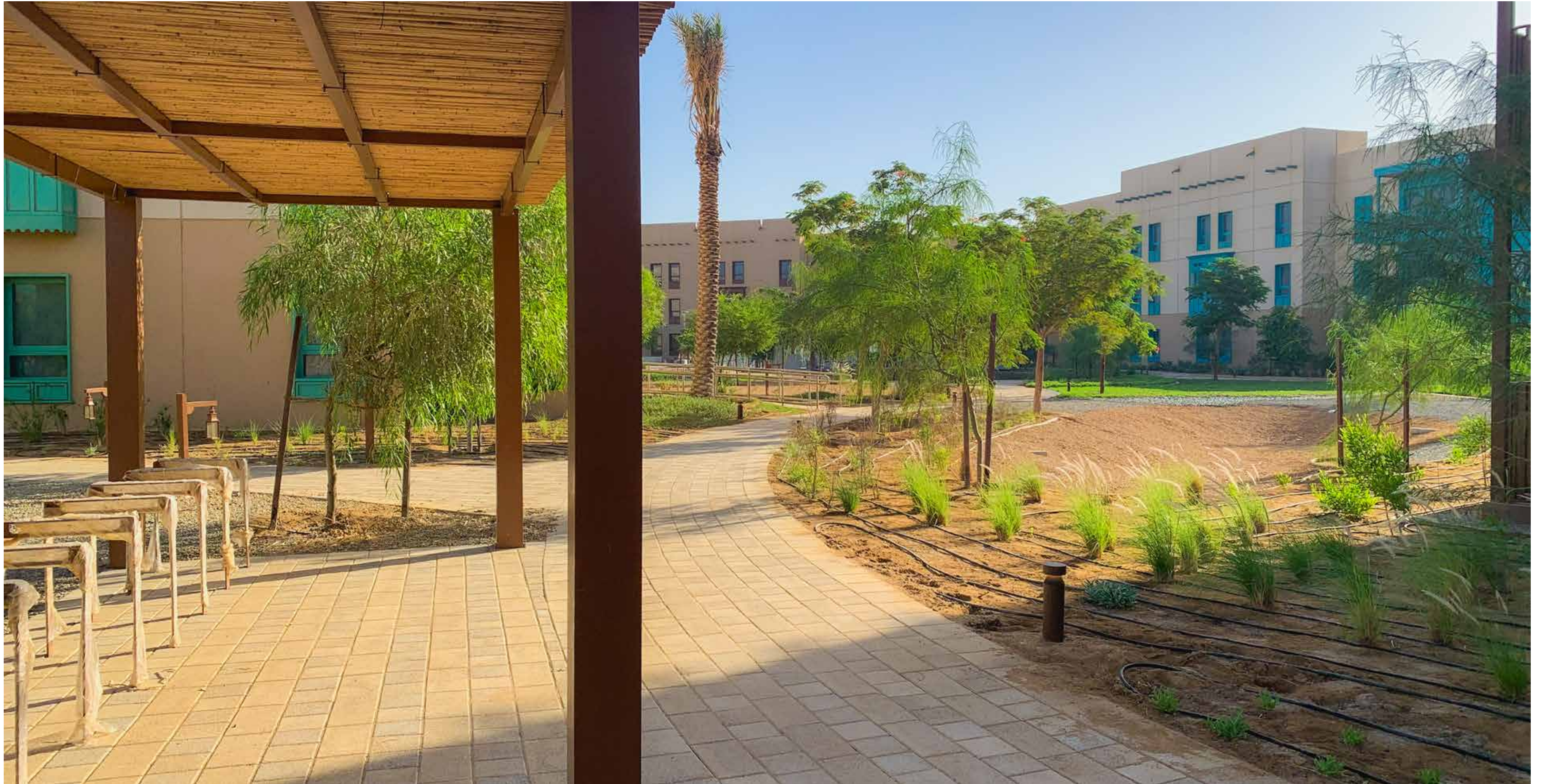
















OUR PROJECTS

EARTHWORKS & MASS EXCAVATION

EARTHWORKS, EXCAVATION, SITE GRADING

This project involved extensive site preparation and bulk earthworks in Tabuk Province. Our scope covered mass excavation, cut-and-fill operations, grading of large tracts of desert terrain, and multi-layer compaction to create stable platforms for subsequent development.

The works included the formation of deep excavations, controlled hauling and placement of fill material, and precision leveling across wide open areas. Heavy equipment fleets were deployed to deliver high productivity and accuracy over challenging soil conditions.

SERVICES
Earthworks

CLIENT
NEOM

LOCATION
Tabuk, Saudi Arabia

YEAR OF COMPLETION
2023





OUR PROJECTS

NEOM Roads Project

CIVIL & INFRASTRUCTURE WORKS

This project involved the execution of key road and drainage infrastructure works in support of a development within Tabuk. The scope comprised the construction of reinforced concrete box culverts, pipe culverts, and associated headwalls to manage stormwater flow and ensure long-term resilience of the road corridor.

Works also included road formation, subgrade preparation, asphalt paving, and installation of safety barriers and curbstone. Subsurface works such as utility crossings and protection for existing services were executed in coordination with drainage structures to maintain continuity across the corridor.

SERVICES

Civil & Infrastructure Construction Works

CLIENT

NEOM

LOCATION

NEOM, Saudi Arabia

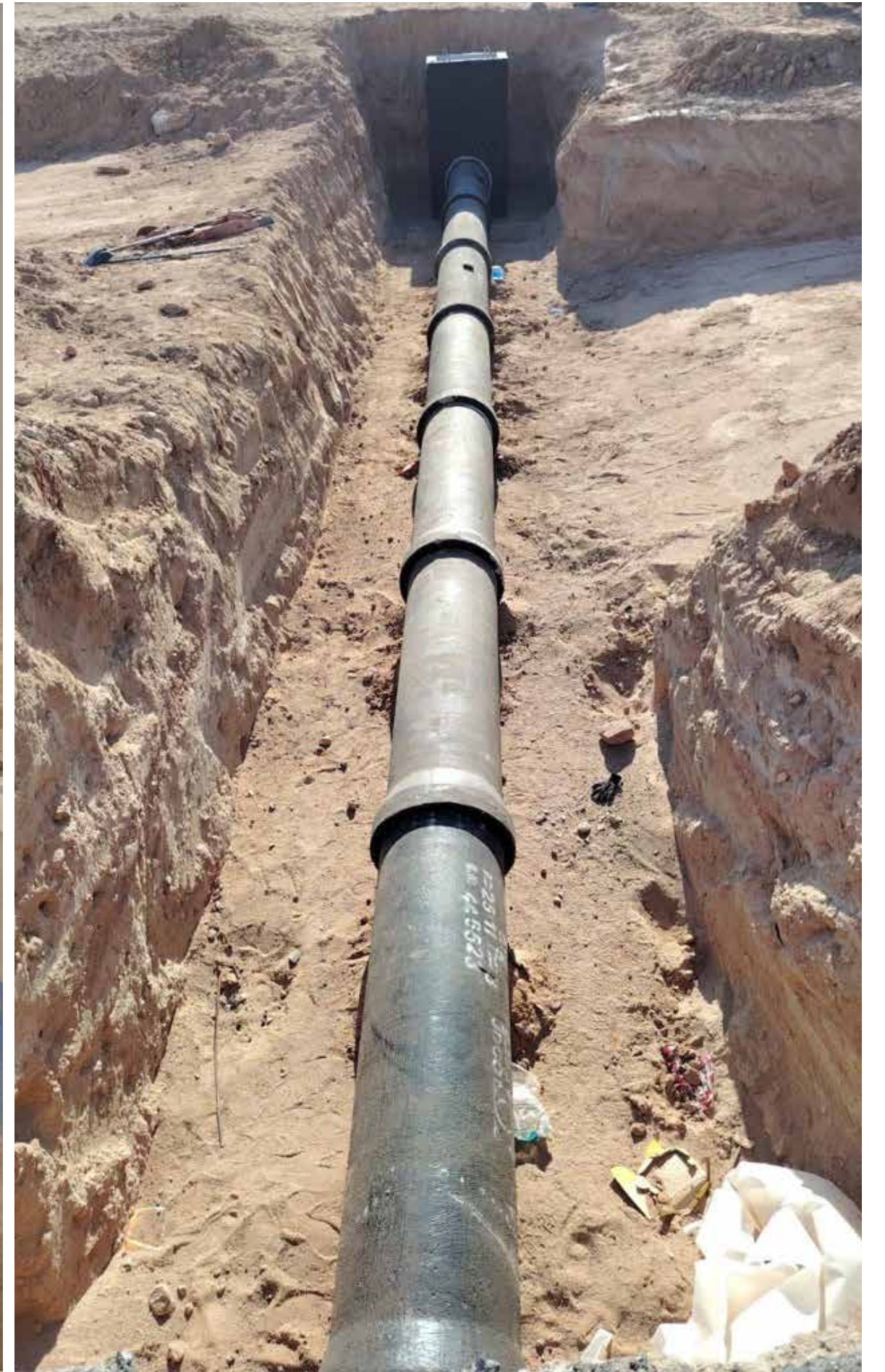
YEAR OF COMPLETION

2022









OUR PROJECTS

MiSK City Boulevard Road

BOULEVARD PUBLIC REALM CONSTRUCTION

Delivering the public realm works of a vibrant multi-mode transportation link connecting the different districts of the development and extending to over 3KM in linear length. This open space is intended to become a great urban place that draws together spatial, functional, and emotional qualities to unlock multi-faceted experiences for its visitors.

Our scope of services included rough and final grading, installation of irrigation system, construction of footpaths and cycle paths, supply and installation of softscape materials, construction of boundary walls and retaining walls as well as the supply and installation of street furniture.

SERVICES

Landscape Construction Works

CLIENT

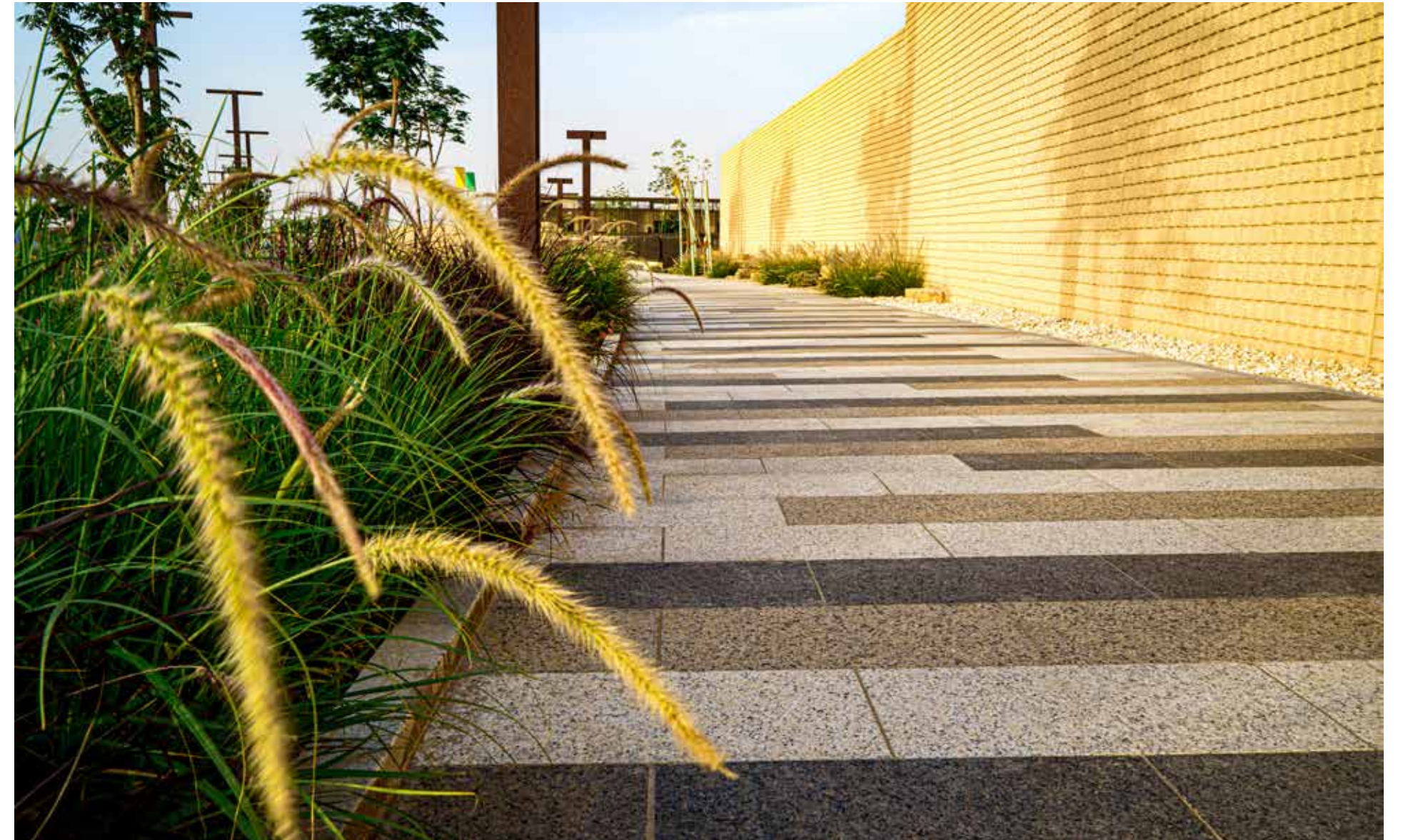
Mohammad Bin Salman Non-Profit City

LOCATION

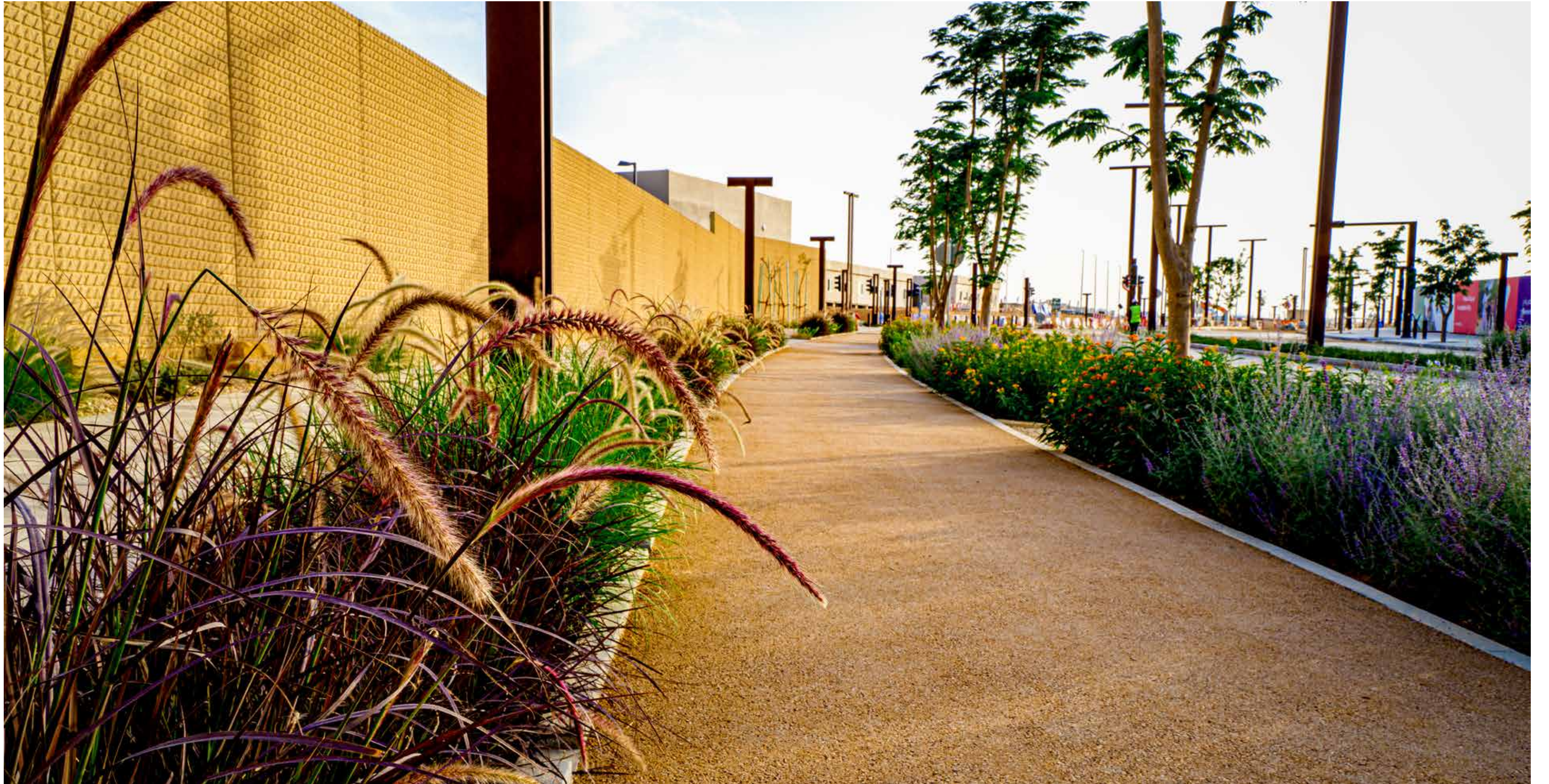
Riyadh, Saudi Arabia

YEAR OF COMPLETION

2023











OUR PROJECTS

Gabion Wall Project

CIVIL WORKS

This 185-meter-long gabion wall forms a critical structural and visual component of the overall development. Engineered to retain earth and manage surface water runoff, the wall provides both functional stability and a natural aesthetic.

Constructed using galvanised steel mesh and hand-packed natural stone, the gabion system offers a durable, low-maintenance solution. Its design integrates with adjacent hardscape and softscape features.

The scope of work includes full excavation, subgrade preparation, foundation construction, wall assembly, and finishing.

SERVICES

Civil & Infrastructure Construction Works

CLIENT

Green Riyadh

LOCATION

Riyadh, Saudi Arabia

YEAR OF COMPLETION

2024



OUR PROJECTS

Riyadh Royal Palace

ROYAL PALACE

Made of seven gardens within a four-hectare property. Each has its own particular function for the life of the family and all are connected by a path for walks among the greenery.

Within the high walls that separate and protect the private spaces from the public domain of the city, areas of lush vegetation alternate with areas of rest, shading and reflection with bodies of water, sails, rugs, and cushions.

SERVICES

Landscape + Infrastructure Construction

CLIENT

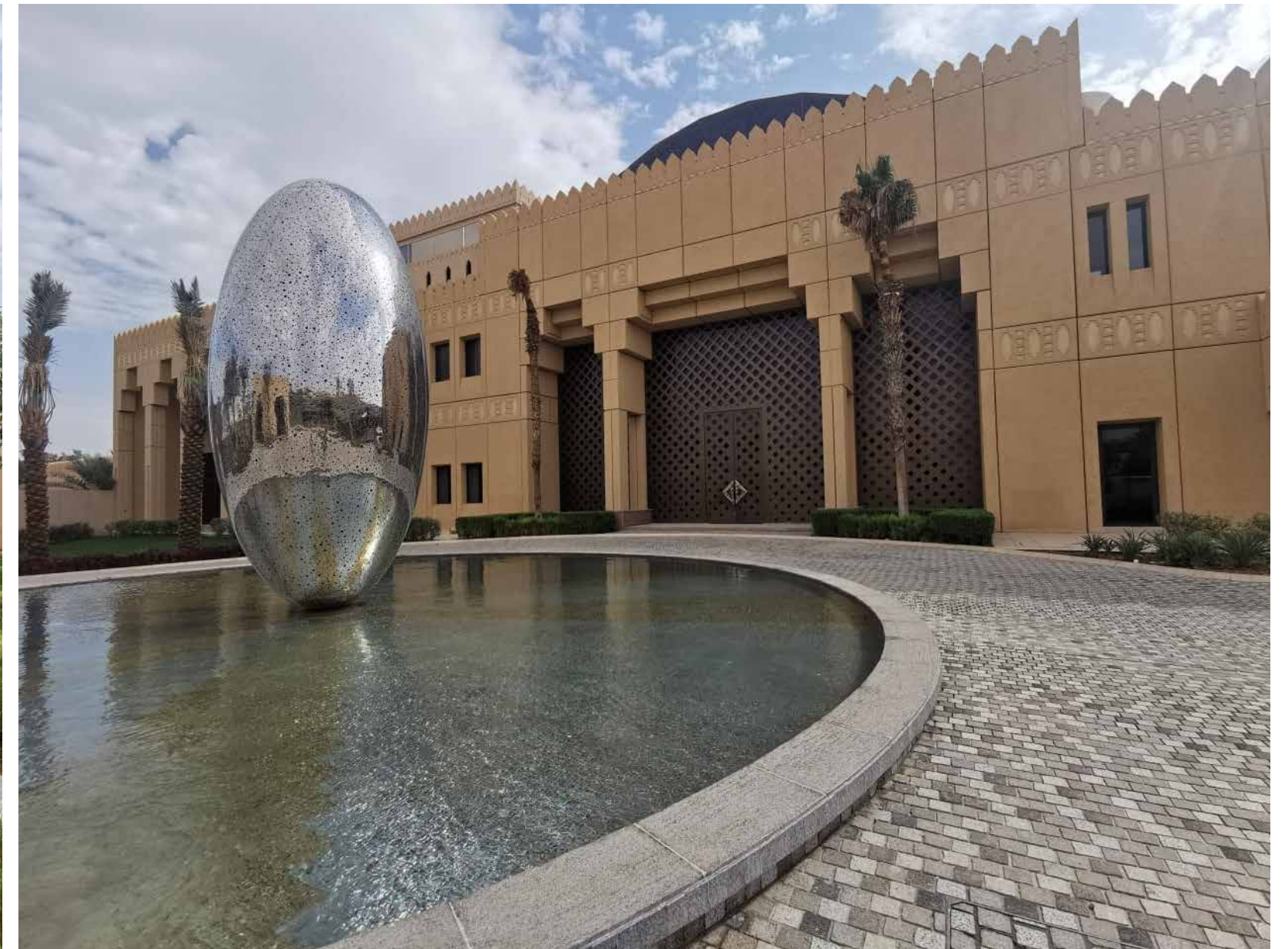
Private

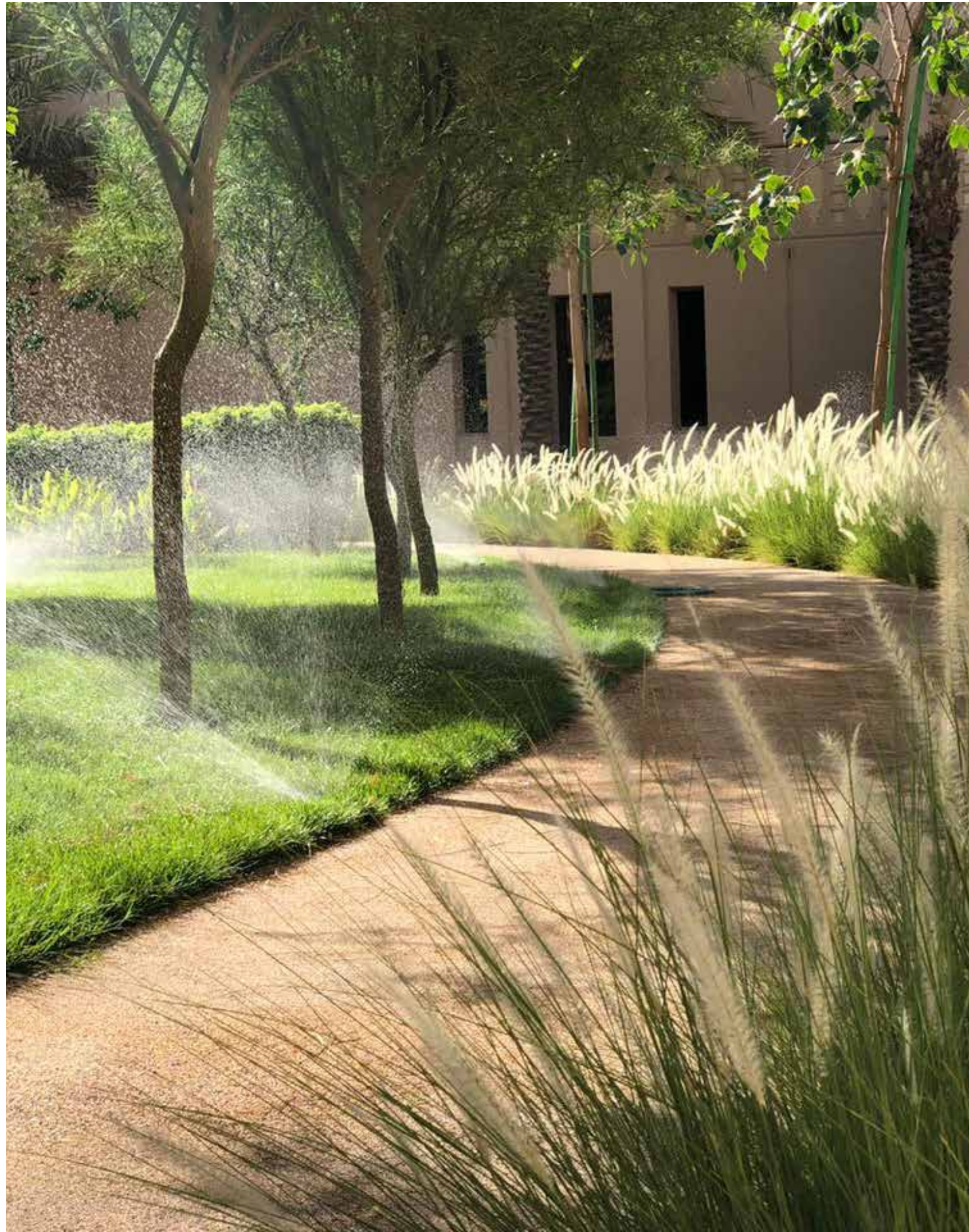
LOCATION

Riyadh, Saudi Arabia

YEAR OF COMPLETION

2022







OUR PROJECTS

Mohammed Habbas Almutairi Furniture Factory

MOHAMMED HABBAS ALMUTAIRI FURNITURE FACTORY

This project involved the construction of a multi-building industrial complex of 25,000 sqm. The project included large structural steel warehouse and fabrication facilities, administrative offices, and supporting service facilities. The scope covered fabrication, supply, and installation of structural steel components and provision of high-load bearing floors. We also executed associated civil works, including paving and infrastructure tie-ins, to ensure the facility was fully operational and ready for tenant occupation.

SERVICES

Structural Steel Works & Industrial Building Construction

CLIENT

Mohammed Habbas Almutairi Factory

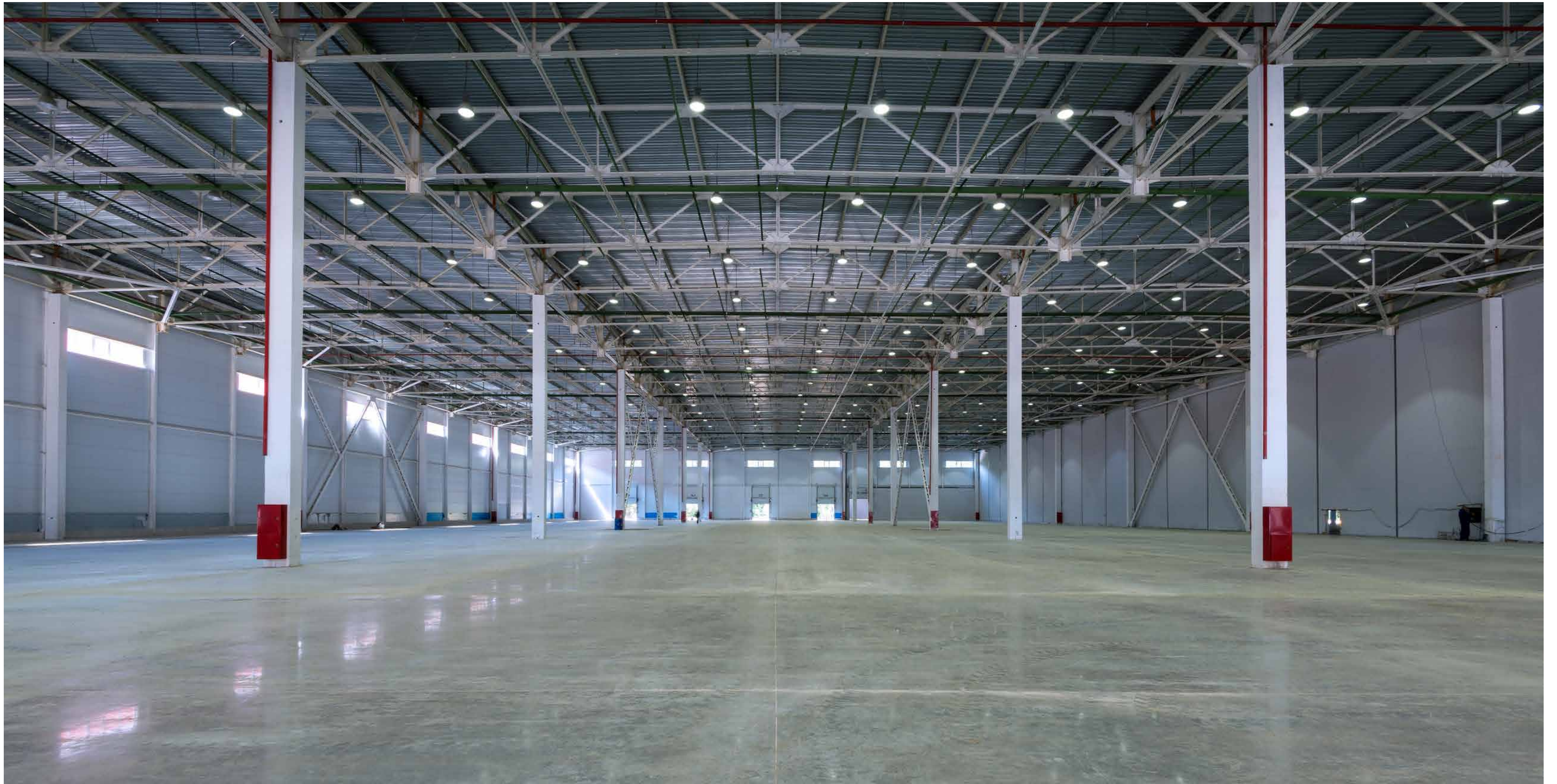
LOCATION

2nd Industrial City Dammam, Saudi Arabia

YEAR OF COMPLETION

2007





OUR PROJECTS

Radisson Blu Hotel & Residences

RADISSON BLU DQ

The Radisson Blu Hotel & Residence sets on a long and narrow site in the verdant Diplomatic Quarter of Riyadh, the building has a modified linear floor-plate to provide visual variety from both inside and outside.

The remainder of the site is occupied by well-lit sunken garden terraces and an entrance court. The entire building envelope performs as a climatic facade that improves energy performance and occupant comfort, with durable terracotta panels and tubes (known as "baguettes") shading the double-glazed curtain wall and insulated backing.

SERVICES

Landscape Construction

CLIENT

King Salman Center for Disability Research

LOCATION

Riyadh, Saudi Arabia

YEAR OF COMPLETION

2017







OUR PROJECTS

Samha Farm

SAMHA FARM

The residential farm project in Riyadh spans over 100,000 square meters across an intriguing topography of upper and lower plateaus. It includes a main villa, three villas for the sons, a reception building, and a recreational building. The main villa offers luxurious living spaces, while the additional villas provide privacy and independence. The project also features a reception building for guests and a recreational building with amenities such as a swimming pool and gymnasium. The integration of the natural landscape ensures a serene and immersive environment, offering a unique living experience in the outskirts of Riyadh.

SERVICES

Infrastructure, Landscape Architecture

CLIENT

Confidential

LOCATION

Riyadh, Saudi Arabia

YEAR OF COMPLETION

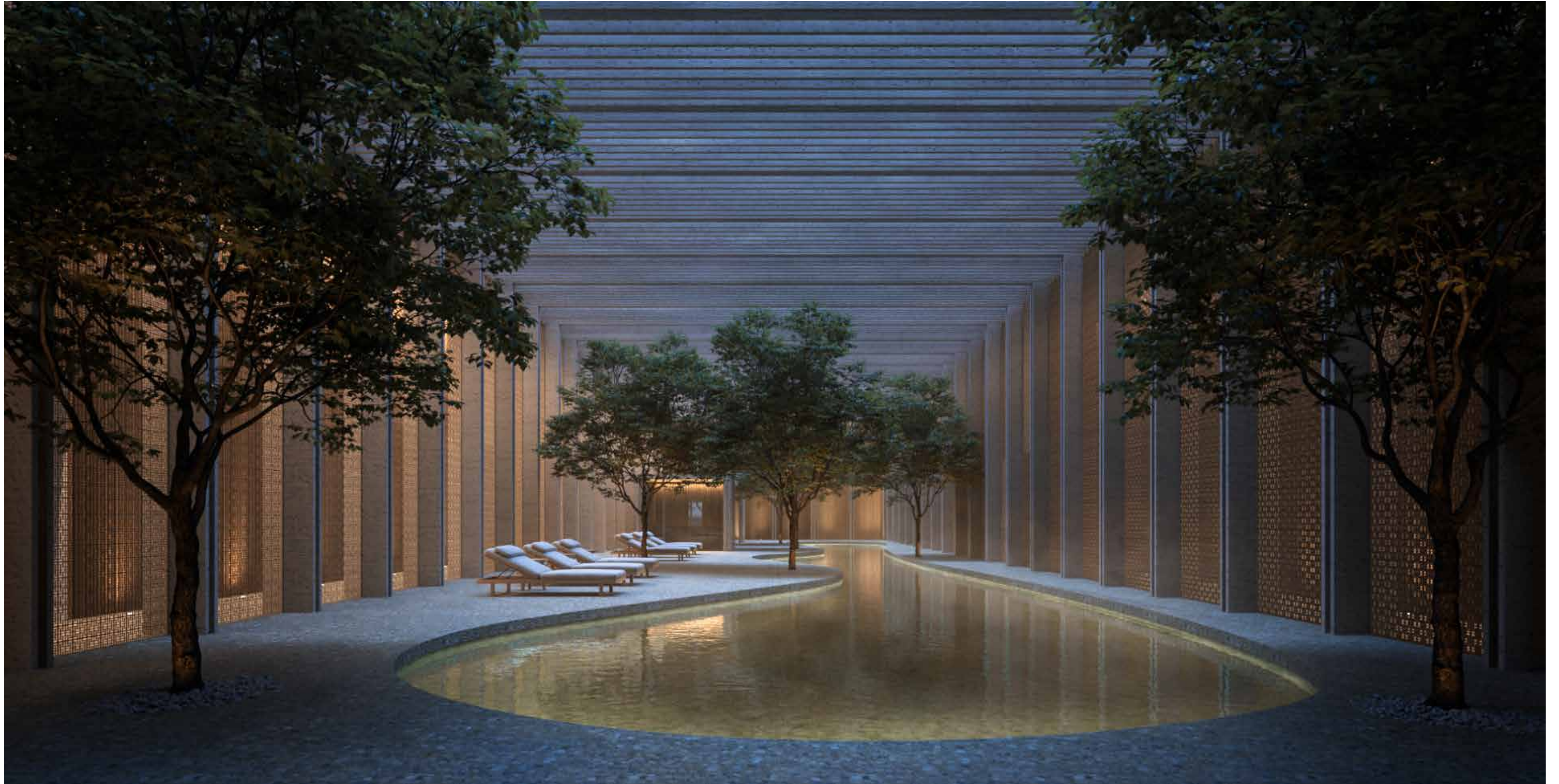
Under construction













GAMA
—
RIYADH, SAUDI ARABIA
CALL. +966 11 200 7171
INFO@GAMACO.SA
GAMACO.SA

GAMA ARABIA LLC
—

©Gama Arabia 2025 All rights reserved. No section or element of this document
may be removed from this document, reproduced, electronically stored or
transmitted in any form without the written permission of Gama.